



Bulletin 800T/800H 30.5 mm Push Buttons

- 30.5 mm mounting hole
- Type 4/13 watertight/oiltight (Bul. 800T)
- Type 4/4X/13 corrosion-resistant/watertight/oiltight (Bul. 800H)
- Heavy industrial stations and operators

Description

The Allen-Bradley Bulletin 800T and 800H 30.5 mm push button product lines are in a class by themselves. They are designed and constructed to perform in the most demanding industrial environments. In terms of sealing and switching performance, you will not find a more dependable push button offering. Allen-Bradley delivers more styles and options of operator types and contact blocks, offering flexibility to meet the most demanding specifications in the world's toughest industrial environments.

Design innovation is key to the performance advantage provided in the Bulletin 800T and 800H offerings. New in this catalog are the **Trigger Action E-Stop** operators, the new standard bearer in a tamper-resistant design. Also new is the **Universal LED Illumination** option that accepts a wide 12...130V AC/DC voltage input. This is compatible with all illuminated operator types, allows retrofitting in existing installations, and incorporates super bright LED technology.

Table of Contents

See below.

Standards Compliance

UL 508

CCC

Certifications

UL Listed
 (File No. E14840, E10314
 Guide No. NKCR, NOIV)

CSA Certified
 (File No. LR1234, LR11924)

CSA C22.2, No. 14

EN/IEC: 60947-5-1

TABLE OF CONTENTS

Description	Page	Description	Page
Specifications	10-3	Specialty Operators	
Assembled Stations	10-5	Potentiometer	10-25
DeviceNet Stations	10-6	Mechanically Interlocked Push Button	10-25
Trigger Action E-Stops	10-7	Cluster Pilot Light.....	10-26
Push Buttons, Momentary		18 mm Small Pilot Light	10-27
Non-Illuminated.....	10-9	1-, 2-, 3-, 4-Way Toggle Switch	10-28
Illuminated.....	10-10	Selector Push Button.....	10-29
Non-Illuminated — with Two-Color Molded Legend Cap	10-11	Cylinder Lock Push Button	10-30
Selector Switches, Non-Illuminated		Padlocking Mushroom Head	10-30
2-Position	10-12	Wobble Stick.....	10-30
3-Position	10-14	Flip Lever Operator.....	10-31
4-Position	10-16	Break-Glass Push Button Station.....	10-32
Selector Switches, Illuminated		Custom-Built Stations	10-33
2-Position	10-18	Enclosures	10-33
3-Position	10-19	Accessories	
Pilot Light Devices	10-20	Contact Blocks.....	10-35
Emergency Stop Operators		Power Modules and Universal LED Module.....	10-36
Push-Pull, Non-Illuminated		Replacement Color Caps.....	10-37
2-Position.....	10-21	Selector Switch Knobs.....	10-38
3-Position.....	10-22	Protective Boots	10-39
Push-Pull, Illuminated		Push Buttons & Miscellaneous	10-40
2-Position.....	10-23	Locking Attachments.....	10-42
3-Position.....	10-24	Guards	10-44
		Replacement Lamps	10-45
		Replacement Keys.....	10-46
		Legend Plates.....	10-47
		Approximate Dimensions & Shipping Weights	10-53
		Typical Pilot Light Wiring Diagram	10-65



Specifications*

Electrical Ratings		
Contact ratings	Refer to the contact ratings tables on page 10-4.	
Dielectric strength	2200V for one minute, 1300V for one minute (Logic Reed)	
Electrical design life cycles	1 000 000 at max. rated load, 200 000 at max. rated load (Logic Reed)	
Mechanical Ratings		
Vibration	10...2000 Hz, 1.52 mm displacement (peak-to-peak) max./ 10 G max. (except Logic Reed)	
Shock	1/2 cycle sine wave for 11 ms \geq 25 G (contact fragility) and no damage at 100 G	
Degree of protection	Type 1/4/12/13 (800T); Type 1/4/4X/12/13 (800H); EN/IEC 60529 IP66/65	
Mechanical design life cycles		
Push buttons	(Momentary, non-illuminated)	10 000 000 min.
	(Momentary, illuminated)	250 000 min.
	(Push-pull/twist-to-release)	250 000 min.
Selector switches	(Non-illuminated)	1 000 000 min.
	(Illuminated, key-operated)	200 000 min.
Potentiometers	25 000 min.	
All other devices	200 000 min.	
Contact operation	Shallow, mini, and low-voltage contact blocks: Slow, double make and break Logic Reed and sealed switch contact blocks: Single break magnetic	
Wire gauge/Terminal screw torque	#18...14 AWG (#18...10 Max Duty) / 6...8 lb•in	
Typical operating forces		
Operators without contact blocks	Flush, extended button, standard mushroom, jumbo plastic mushroom: 2 lbs max. Jumbo and extended aluminum mushroom head: 3.95 lbs max. Maintained selector switch: 3.6 in•lb max.	
Spring return selector switches	3.6 in•lb to stop, 0.2 in•lb to return	
Illuminated push buttons and push-to-test pilot lights	5 lb max.	
2-position push-pull	8.0 lb max. push or pull	
3-position push-pull	8 lb max. push to in position or pull to center position (15 lb max. pull to out position)	
Twist-to-release or push-pull	9 lbs max. push or pull 30 in•oz max. twist, 6 in•oz minimum return	
Potentiometer	Rotational torque 3...12 in•oz; stopping torque 12 in•lb (minimum)	
Contact blocks	Standard	1 lb
	Logic Reed	1 lb max.
	Sealed switch	3 lb max. at 0.205 in. plunger travel
	Stackable sealed switch	1 lb max.
	MaxDuty	1.4 lb max.
	PenTUFF	1.4 lb max.
Self Monitoring	1.6 lb	
Environment		
Temperature range	Operating	-40...+131 °F (-40...+55 °C)
	Storage	-40...+185 °F (-40...+85 °C)
Note: Operating temperatures below freezing are based on the absence of moisture and liquids. Consult your local Rockwell Automation sales office or Allen-Bradley distributor for use in lower temperature applications.		
Humidity	50...95% RH from 77...140 °F (25...60 °C) per Procedure IV of MIL-STD-810C, Method 507.1 cycling test	

* Performance Data — See Important- 3.

30.5 mm Push Buttons

Specifications

Standard Contact Ratings

Minimum: 24V, 24 mA

Maximum thermal continuous current I_{th} 10 A AC/2.5 A DC. Bulletin 800T units with 800T-XA contacts have ratings as follows:

Max. Operntl. Volts U_e	Utilization Category		Rated Operational Currents		
	IEC	NEMA	Volts U_e	Make	Break
AC 600	AC-15	A600	120...600	7200VA	720VA
			72...120	60 A	720VA
			24...72	60 A	10 A
DC 600	DC-13	Q600	28...600	69VA	
			24...28*	2.5 A	

* For applications below 24V/24 mA, PenTUFF or Logic Reed contacts are recommended.

Sealed Switch Contact Ratings

Minimum: 5V, 1 mA

Maximum continuous current I_{th} 5 A. Bulletin 800T units have control circuit ratings with sealed switch contact blocks as follows:

Max. Operntl. Volts U_e	Utilization Category		Rated Operational Currents		
	IEC	NEMA	Volts U_e	Make	Break
AC 600	AC-15	B600	120...600	3600VA	360VA
			0...120	30 A	3 A
DC 300	DC-13	P300	24...300	138VA	
			0...24	5.0 A	

Stackable Sealed Switch Contact Ratings

Minimum: 5V, 10 mA (digital); 24V, 1 mA (analog)

Maximum continuous current I_{th} 2.5 A. Bulletin 800T units have control circuit ratings with sealed switch contact blocks as follows:

Max. Operntl. Volts U_e	Utilization Category		Rated Operational Currents		
	IEC	NEMA	Volts U_e	Make	Break
AC 300	AC-15	C300	120...300	1800VA	180VA
			0...120	15 A	1.5 A
DC 150	DC-13	Q150	24...150	69VA	
			0...24	2.5 A	

Logic Reed Contact Ratings

Minimum — DC: 5V, 1 mA

Maximum — DC: 30V, 0.06 A, AC: 150V, 0.15 A

Should only be used with resistive loads.

Materials Used in 800H Type 4X Operators Thermoplastic Polyester (Fiberglass Reinforced)

- Bushings
- Mounting Rings
- Sockets

Thermoplastic Polyester

- Non-illuminated button caps

Transparent Amorphous Nylon

- Pilot light lens cap
- Illuminated button caps

Glass Filled Crystalline Nylon

- Thrust washer

Mineral Filled Nylon

- Trim washer

Nitrile (Synthetic Rubber)

- Gaskets and internal seals

PenTUFF™ (Low Voltage) Contact Ratings

Minimum DC: 5V, 1 mA

Maximum thermal continuous current I_{th} 2.5 A AC/1.0 A DC. Bulletin 800T units with 800T-XAV contacts have ratings as follows:

Max. Operntl. Volts U_e	Utilization Category		Rated Operational Currents		
	IEC	NEMA	Volts U_e	Make	Break
AC 300	AC-15	C300	120...300	1800VA	180VA
			0...120	15 A	1.5 A
DC 150	DC-13	R150	24...150	28VA	
			0...24	1.0 A	

Snap Action Contact Ratings

Max. Operntl. Volts U_e	Contact Rating Designation	Rated Operational Currents		
		Volts U_e	Make	Break
AC 300	A300	120...300	7200VA	720VA
		24...72	60 A	10 A
DC 250	—	230...250	0.2 A	
		115...125	0.4 A	

MaxDuty Contact Rating

Maximum thermal continuous current I_{th} 24 A.

Pilot Duty — 120V AC, 12 A; 24V DC, 10 A

Motor Ratings — 120V AC, 1.5 Hp; 240V AC, 3 Hp; 24V DC, 10 A FLA/60 A LRA

Time Delay Contacts

Max. Operntl. Volts U_e	Contact Rating Designation	Rated Operational Currents		
		Volts U_e	Make	Break
AC 120	B150	120	3600VA	360VA

Note: This device is not rated for DC applications.

Adjustment range: 0.5...15 s \pm 25% I_{th} = 5 A

Momentary Contact Push Button Devices, Non-Illuminated



Flush Head Unit
 Cat. No. 800T-A1A



Extended Head Unit
 Cat. No. 800T-B6A



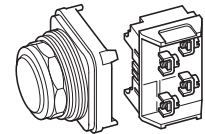
Booted Unit
 Cat. No. 800H-R2A



Bootless Flush Head Unit
 Cat. No. 800H-AR1A

Contact Type	Button Color	Type 4/13		Type 4/4X/13	
		Flush Head	Extended Head	Booted*	Bootless Flush Head
		Cat. No.	Cat. No.	Cat. No.	Cat. No.
No Contact	Green	800T-A1	800T-B1	800H-R1	800H-AR1
	Black	800T-A2	800T-B2	800H-R2	800H-AR2
	Red	800T-A6	800T-B6	800H-R6	800H-AR6
1 N.O.	Green	800T-A1D1	800T-B1D1	800H-R1D1	800H-AR1D1
	Black	800T-A2D1	800T-B2D1	800H-R2D1	800H-AR2D1
	Red	800T-A6D1	800T-B6D1	800H-R6D1	800H-AR6D1
1 N.C.	Green	800T-A1D2	800T-B1D2	800H-R1D2	800H-AR1D2
	Black	800T-A2D2	800T-B2D2	800H-R2D2	800H-AR2D2
	Red	800T-A6D2	800T-B6D2	800H-R6D2	800H-AR6D2
1 N.O. - 1 N.C.	Green	800T-A1A	800T-B1A	800H-R1A	800H-AR1A
	Black	800T-A2A	800T-B2A	800H-R2A	800H-AR2A
	Red	800T-A6A	800T-B6A	800H-R6A	800H-AR6A

800 T - A 1 A
 a b c d e f



a

Protection Rating	
Code	Description
T	Metal, Type 4/13
H	Plastic, Type 4/4X/13

b

Finger-Safe Guards	
Code	Description
Blank	No guards
C	Guards on terminals

c

Operator Type		
800T Type 4/13	Description	800H Type 4/4X/13
Code		Code
A	Flush head	AR
B	Extended head	BR
D	Mushroom head	DR
DX	Mushroom head less color cap	DRX
—	Bootless guarded head	GR
—	Booted head	R*

d

Color Cap	
Code	Description
Blank	Used only when ordering Operator Type DX/DRX
1	Green
2	Black
3	Orange*

d (cont'd)

Color Cap	
Code	Description
4	Grey*
5	White*
6	Red
7	Blue
9	Yellow

e

Special Mushroom Head	
Code	Description
J§	Jumbo mushroom head — plastic
L§	Jumbo mushroom head — metal

Note: Special mushroom head options only apply to mushroom head operator type code D/DR (Table c).

f

Contact Block(s)	
Code	Description
Blank	No contacts
Standard	
D1	1 N.O.
D2	1 N.C.
D3	1 N.O.E.M.
D4	1 N.C.L.B.
D5	1 N.O. (Mini)
D6	1 N.C. (Mini)
A1	1 N.C.L.B. - 1 N.O.
A2	2 N.O.‡
A4	2 N.C.
A7	1 N.C.L.B. - 1 N.C.
A	1 N.O. - 1 N.C.
B	2 N.O. - 2 N.C.

f (cont'd)

Contact Block(s)	
Code	Description
PenTUFF (Low Voltage)	
D1V	1 N.O.
D2V	1 N.C.
D3V	1 N.O.E.M.
D4V	1 N.C.L.B.
AV	1 N.O. - 1 N.C.
BV	2 N.O. - 2 N.C.
Time Delay	
T	1 N.O. Depress close, delayed opening
S	1 N.C. Depress open, delayed closure
Snap Action	
M	1 N.O. - 1 N.C.
N	2 N.O. - 2 N.C.
Class 1, Div. 2/Zone 2 Logic Reed	
D1R	1 N.O.
D2R	1 N.C.
A2R	2 N.O.‡
A4R	2 N.C.
AR	1 N.O. - 1 N.C.
BR	2 N.O. - 2 N.C.

f (cont'd)

Contact Block(s)	
Code	Description
Class 1, Div. 2/Zone 2 Sealed Switch	
D1P	1 N.O.
D2P	1 N.C.
AP	1 N.O. - 1 N.C.
BP	2 N.O. - 2 N.C.
Stackable Sealed Switch	
D1Y	1 N.O.
D2Y	1 N.C.
A2Y	2 N.O.
A4Y	2 N.C.
AY	1 N.O. - 1 N.C.
BY	2 N.O. - 2 N.C.
Time Delay Contacts	
Series C field installable kits can only be used with Series T or later operators. Adjustable range of 0.5 to 15 s + 25%. Maximum continuous current I _{th} 5 A.	
Snap Action Contacts	
Snap-action contacts feature a quick make, quick break snap-action mechanism that is only available on factory assembled units. Maximum continuous current I _{th} 10 A.	

* Underlying operators are "flush head" type, except red which are "extended head". Boot material is chlorosulfonated polyethylene.
 † Not available for booted operators.
 ‡ A2 and A2R contact blocks cannot be stacked upon, but can stack on other contact blocks.
 § Jumbo mushroom heads not available in white color.



Bulletin 800T/H
30.5 mm Push Buttons
 Push Button Operators

Momentary Contact Push Button Devices, Illuminated



Extended Head Without Guard
Cat. No. 800T-PB16R



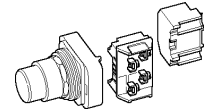
Extended Head with Guard
Cat. No. 800H-PRB16R

Type	Lamp Type	Volts	Color	Type 4/13		Type 4/4X/13	
				Extended Head Without Guard*	Extended Head With Guard*	Extended Head without Guard*	Extended Head with Guard*
				Cat. No.	Cat. No.	Cat. No.	Cat. No.
Operator Only*				800T-SB00XX	800T-SA00XX	800H-SRB00XX	800H-SRA00XX
Full Voltage	Incandescent	24V AC/DC	Red	800T-QB24R	800T-QA24R	800H-QRB24R	800H-QRA24R
			Green	800T-QB24G	800T-QA24G	800H-QRB24G	800H-QRA24G
			Amber	800T-QB24A	800T-QA24A	800H-QRB24A	800H-QRA24A
	No Lamp	0...250V AC/DC	No Lens	800T-QBN25	800T-QAN25	800H-QRBN25	800H-QRAN25
Universal	LED	12...130V AC/DC	Red	800T-QBH2R	800T-QAH2R	800H-QRBH2R	800H-QRAH2R
			Green	800T-QBH2G	800T-QAH2G	800H-QRBH2G	800H-QRAH2G
			Amber	800T-QBH2A	800T-QAH2A	800H-QRBH2A	800H-QRAH2A
Transformer	Incandescent	120V AC, 50/60 Hz	Red	800T-PB16R	800T-PA16R	800H-PRB16R	800H-PRA16R
			Green	800T-PB16G	800T-PA16G	800H-PRB16G	800H-PRA16G
			Amber	800T-PB16A	800T-PA16A	800H-PRB16A	800H-PRA16A
	LED		Red	800T-PBH16R	800T-PAH16R	800H-PRBH16R	800H-PRAH16R
	Green		800T-PBH16G	800T-PAH16G	800H-PRBH16G	800H-PRAH16G	
	Amber		800T-PBH16A	800T-PAH16A	800H-PRBH16A	800H-PRAH16A	
	No Lamp		No Lens	800T-PBN16	800T-PAN16	800H-PRBN16	800H-PRAN16

* Includes as standard one Cat. No. 800T-XA (1 N.O. - 1 N.C.) contact block.

* Operator only supplied without power module, lamp, lens cap, or contact blocks.

800 T - P B H 16 R
 a b c d e f g h



a

Protection Rating	
Code	Description
T	Metal, Type 4/13
H	Plastic, Type 4/4X/13

b

Finger-Safe Guards	
Code	Description
Blank	No guards
C	Guards on terminals

c

Power Module Type		
800T Type 4/13	Description	800H Type 4/4X/13
Code		Code
P	Transformer (or dual input)	PR
Q	Full voltage/ Universal	QR

d

Head Type	
Code	Description
A	Extended head with guard
B	Extended head without guard
M	Mushroom
MJ	Jumbo mushroom

e

Illumination Options	
Code	Description
Blank	Incandescent
H	LED
Dual Input	
D	Diode type ‡
T	Transformer — relay type
TH	Transformer — relay type LED

f

Voltage	
Transformer	
Code	Description
16	120V AC, 50/60 Hz
26	240V AC, 50/60 Hz
46	480V AC, 50/60 Hz
56	600V AC, 50/60 Hz
Full Voltage — Incandescent	
12	12V AC/DC
24	24V AC/DC
48	48V AC/DC
10	120V AC/DC
20	240V AC/DC
Universal — LED	
2	12...130V AC/DC
Dual Input	
16	120V AC
24	24V AC/DC ➤

g

Lens Color	
Code	Description
Blank	No lens with standard contacts 1 N.O. - 1 N.C.
X	No lens if ordering any contacts other than standard 1 N.O. - 1 N.C.
A	Amber
B	Blue
C	Clear
G	Green
R	Red
W	White

h

Contact Block(s)	
Code	Description
X	No contacts
Standard	
Blank	1 N.O. - 1 N.C.
D1	1 N.O.
PenTUFF (Low Voltage)	
AV	1 N.O. - 1 N.C.
Class 1, Div. 2/Zone 2	
Logic Reed	
AR	1 N.O. - 1 N.C.
Sealed Switch	
AP	1 N.O. - 1 N.C.
Stackable Sealed Switch	
AY	1 N.O. - 1 N.C.

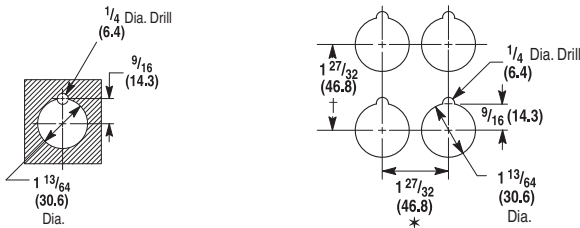
‡ Diode type dual input provides circuit isolation via opposing diodes. Not recommended for use with solid-state outputs.
 ➤ Dual input diode only.



Approximate Dimensions

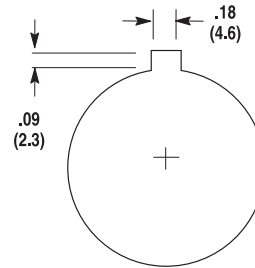
Dimensions in inches (millimeters). Dimensions are not intended to be used for manufacturing purposes.

Mounting Instructions for Push Buttons with Shallow Blocks, Mini Blocks, Logic Reed Blocks, Sealed Switch Blocks, and Time Delay Blocks (see footnotes for exceptions)



Sketch illustrates the minimum distance between centerlines when mounting Bulletin 800T/H controls either side-by-side, facing each other, or one above the other. When control units are mounted so that the contact block terminals face each other, the 2-1/4 in. (57.2 mm) dimension must be used in order to get proper electrical clearance. When control units are mounted so that the contact block terminals do not face each other, the 1-27/32 in. (46.8 mm) dimension can be used.

Typical Panel Cut-Out



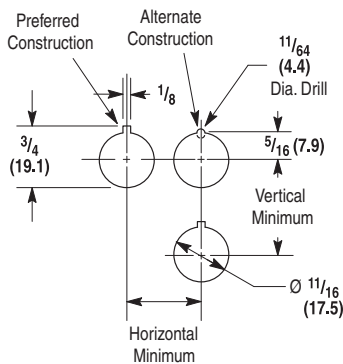
- * Change to 2-1/4 in. (57.2 mm) for transformer type pilot light, push-to-test pilot lights, illuminated selector switches, and all push-pull buttons.
Note: Large legend plate requires minimum horizontal spacing of 2-15/32 in. (62.7 mm).
- ⊛ Vertical minimum spacing dimension changes for the following legend plates: jumbo 2-15/32 in. (62.7 mm); large 2-7/16 in. (61.9 mm); cluster pilot light and 2-, 3-, 4-way switches 2-1/16 in. (52.4 mm).

Panel Thickness — Kits are shipped with three 1/16 in. (1.58 mm) gaskets. Refer to table below for number of washers required for various panel thicknesses.

	1/16 in. (1.6 mm) (16 Gauge)	7/64 in. (2.8 mm) (12 Gauge) 9/64 in. (3.6 mm) (10 Gauge)	3/16 in. (4.8 mm) Panel	Thicker Than 3/16 in. (4.8 mm) Panel	Thicker Than 1/4 in. (6.4 mm) Panel
800T	3 washers	2 washers	1 washer	Counterbore to 3/16 in. (4.8 mm)	Counterbore to 3/16 in. (4.8 mm)
800H	4 washers	3 washers	2 washers	1 washer	Counterbore to 1/4 in. (6.4 mm)

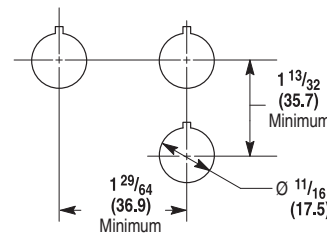
Mounting Instructions for 18 mm Small Pilot Lights

Type A Legend Plate



Cat. No. 800T-N515

Type B Legend Plate

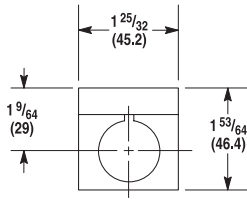


Device	Dimensions	
	Horizontal	Vertical
800T-PS, PSD, PST, QS, QST and RST	31/32 (24.6)	1-5/32 (29.4)
800T-PSDT	1-3/64 (26.6)	1-15/64 (31.4)

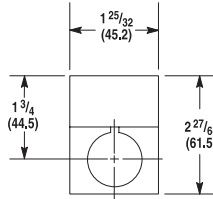
Bulletin 800T/H
30.5 mm Push Buttons
 Approximate Dimensions

Dimensions in inches (millimeters). Dimensions are not intended to be used for manufacturing purposes.

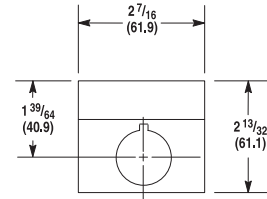
Legend Plate Dimensions (Bul. 800T Only)



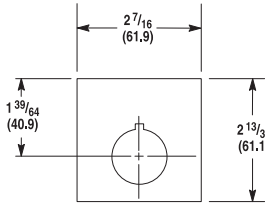
Standard Legend Plate



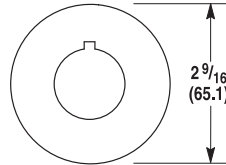
Jumbo Legend Plate



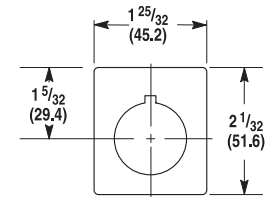
**Large Legend Plate
(Automotive Industry Type)**



**Large Size
Push-Pull/Twist Legend Plate
Cat. No. 800T-X647***



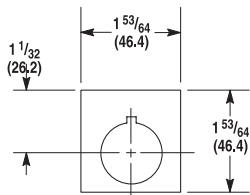
**Round
Cat. No. 800T-X646***



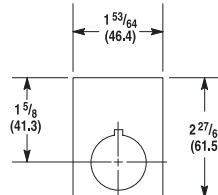
**Cluster Pilot Light and
2-3-4 Way Switch
Silver Legend Plate
Cat. No. 800T-X619**

* For panel mounting only. Not for use with Allen-Bradley enclosures.

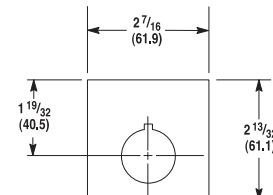
Legend Plate Dimensions (Bul. 800H Only)



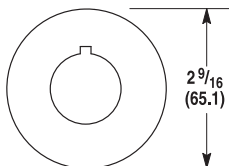
**Type 4/4X
Standard Legend Plate**



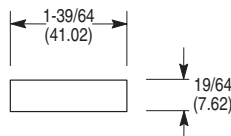
**Type 4/4X
Jumbo Legend Plate**



**Type 4/4X
Large Legend Plate
(Automotive Industry Type)**



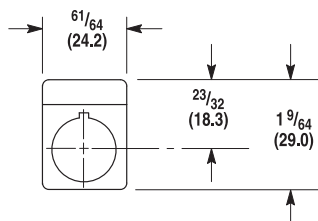
**Type 4/4X
Round**



**Type 4/4X
Standard Legend Plate
(Flip Lever Operators)**

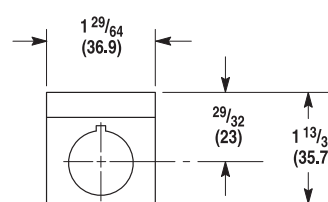
Legend Plate Dimensions (Bul. 800T 18 mm Pilot Lights Only)

**Legend Plate for Small Pilot Light
Type A Legend**



Cat. No. 800T-N515

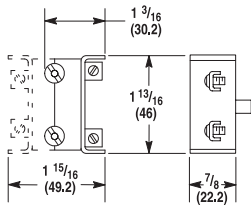
**Legend Plate for Small Pilot Light
Type B Legend**



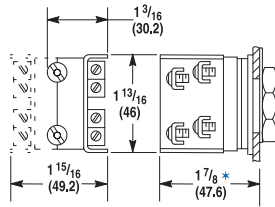
**Cat. No. 800T-N516
(Automotive Industry Type)**

Dimensions in inches (millimeters). Dimensions are not intended to be used for manufacturing purposes.

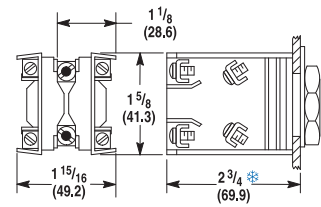
Blocks (Bul. 800T Only)



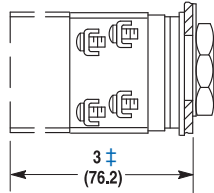
Mini Contact Block
 7/8 (22.2) Deep



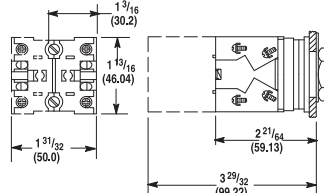
**Shallow, PenTUFF,
 and Logic Reed Contact Blocks**
 1-1/8 (28.6) Deep



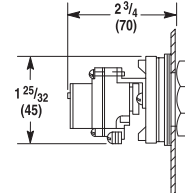
Sealed Switch Block
 2 (50.8) Deep



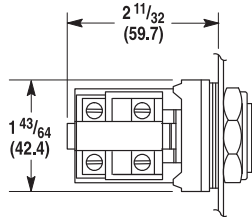
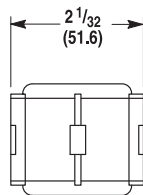
Tandem Mounting
 (2 shallow contact
 blocks stacked)



Stackable Sealed Switch Block
 1.58 (40.1) Deep



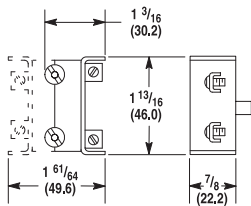
Time Delay Contact Block
 (For Push Buttons Only)



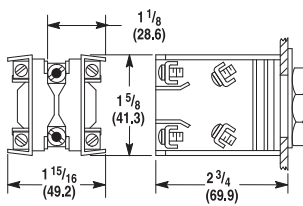
Snap Action Contact Block (For Push Button Only)

- * Dimension shown is for push buttons. Selector switch dimension is 2-1/32 in. (51.6 mm).
- ⊛ Dimension shown is for push buttons. Selector switch dimension is 2-27/32 in. (72.2 mm).
- ± Dimension shown is for push buttons. Selector switch dimension is 3-5/32 in. (80.2 mm).

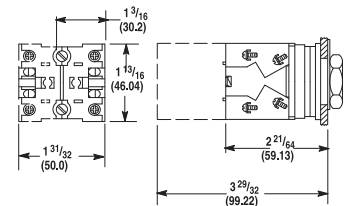
Blocks (Bul. 800H Only)



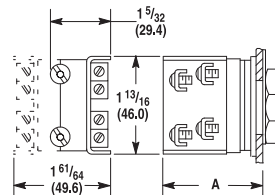
Mini Contact Block



Sealed Switch Block
 2 (50.8) Deep



Stackable Sealed Switch Block
 1.58 (40.1) Deep



**Shallow, PenTUFF and Logic
 Reed Contact Blocks**

Dim.	Momentary Push Button	Maintained Push Button	Selector Switch
A	2 (50.8)	2 (50.8)	1-29/32 (48.4)

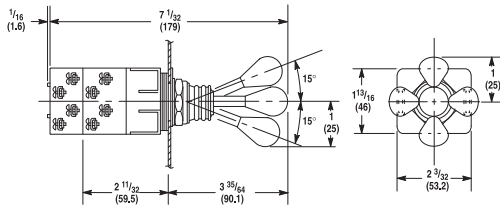
Operator Extension Behind Panel — When mounted with thrust washer, trim washer, or notched legend plate and correct number of rubber washers.

30.5 mm Push Buttons

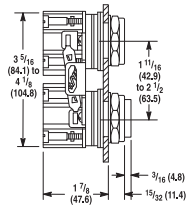
Approximate Dimensions

Dimensions in inches (millimeters). Dimensions are not intended to be used for manufacturing purposes.

Push Buttons and Switches (Bul. 800T Only)

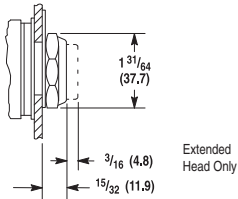


2-3-4 Way Switch
Shipping Wt. with 2 Contact Blocks 6 oz (0.17 kg)
Shipping Wt. with 4 Contact Blocks 8-1/2 oz (0.24 kg)

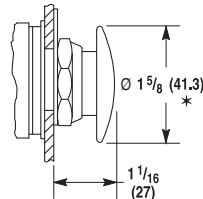


Mechanically Interlocked Maintained Contact Push Button
Shipping Wt. 1 lb (0.45 kg)

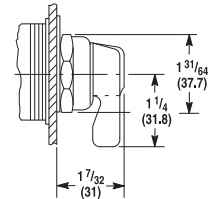
Push Buttons and Pilot Lights



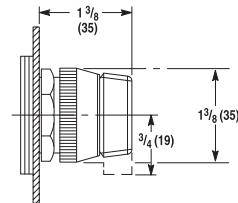
Flush and Extended Head Push Button
Shipping Wt. 5-1/2 oz (0.15 kg)



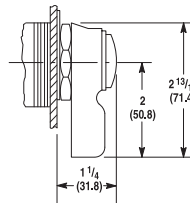
Mushroom Head Push Button
Shipping Wt. 7-1/2 oz (0.21 kg)



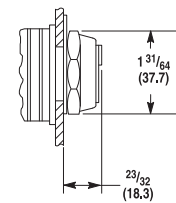
Non-Illuminated Knob Lever and Standard Knob Selector Switch
Shipping Wt. 6 oz (0.17 kg)



Illuminated Knob Lever and Standard Knob Selector Switch
Shipping Wt. 6 oz (0.17 kg)



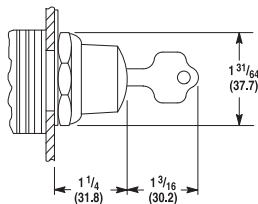
Wing Lever Selector Switch
Shipping Wt. 8 oz (0.22 kg)



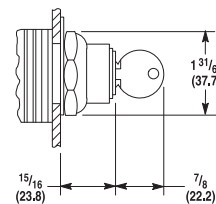
Coin Slot Selector Switch
Shipping Wt. 6 oz (0.17 kg)

* Except jumbo which is 2-1/4 (57.2).

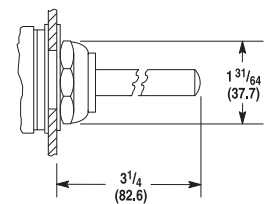
Operator Extension in Front of Panel (Bul. 800T Only)



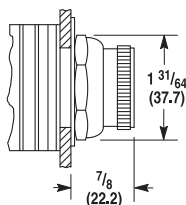
Key Operated Selector Switch
Shipping Wt. 12 oz (0.34 kg)



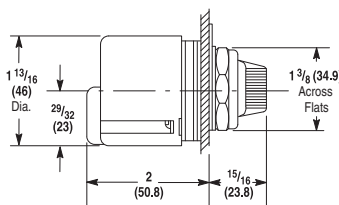
Push Button with Cylinder Lock
Shipping Wt. 12 oz (0.34 kg)



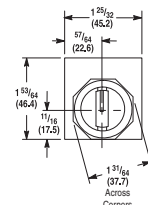
Wobble Stick
Shipping Wt. 9 oz (0.25 kg)



Selector Push Button
Shipping Wt. 6 oz (0.17 kg)

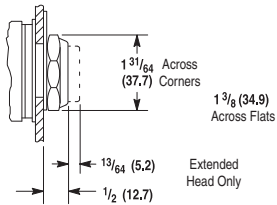


Type J Potentiometer Unit
Shipping Wt. 4 oz (0.11 kg)

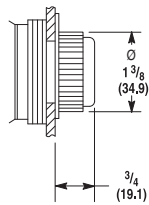


Dimensions in inches (millimeters). Dimensions are not intended to be used for manufacturing purposes.

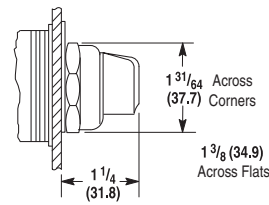
Push Buttons and Switches (Bul. 800H Only)



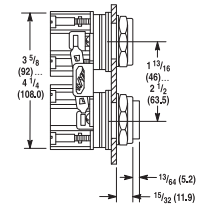
Bootless Flush and Extended Head Momentary Contact Push Button
Shipping Weight. 5-1/2 oz (0.16 kg)



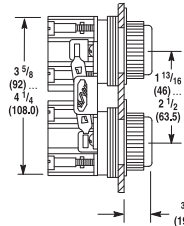
Booted Flush and Extended Head Momentary Contact Push Button
Shipping Weight. 5-1/2 oz (0.16 kg)



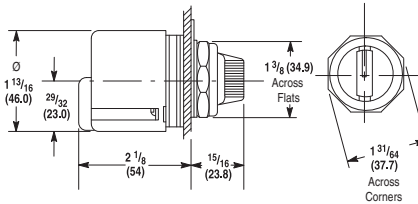
Standard Knob Selector Switch Non-Illuminated
Shipping Weight. 6 oz (0.17 kg)



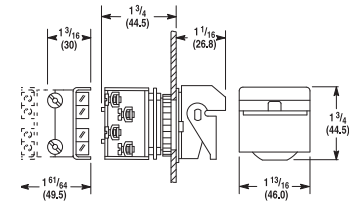
Bootless Maintained Contact Push Buttons



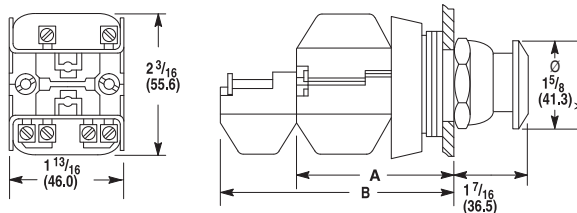
Booted Maintained Contact Push Buttons
Shipping Weight. 1 lb (0.45 kg)



Type J Potentiometer Unit
Shipping Weight. 7 oz (0.20 kg)



Type 4 Flip Lever
Shipping Weight. 8 oz (0.14 kg)



Mushroom Head — Maintained and Momentary

Non-Illuminated Mushroom and Push-Pull Push Buttons

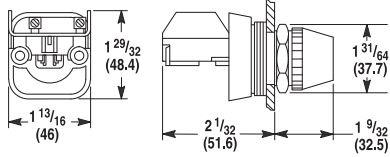
Cat. No. Suffix	Description	Dimensions		Shipping Weights
D4	One Shallow Block	A	2-1/32 (51.6)	5 oz (0.14 kg)
A1, A5 and A7	Two Shallow blocks	A	2-1/32 (51.6)	6 oz (0.17 kg)
B6	Two Shallow Blocks and Two Mini Blocks	B	2-7/8 (73.0)	8 oz (0.22 kg)

* Jumbo versions are 2-1/4 (57.2).

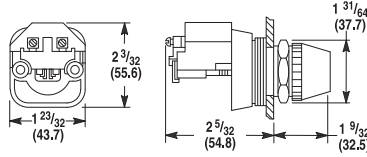
Bulletin 800T/H
30.5 mm Push Buttons
 Approximate Dimensions

Dimensions in inches (millimeters). Dimensions are not intended to be used for manufacturing purposes.

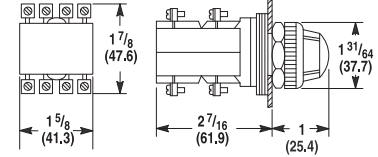
Pilot Light and Illuminated Devices (Bul. 800T Only)



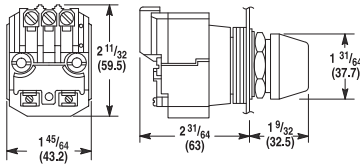
Full Voltage, Neon and Dual Input Pilot Light
 Shipping Wt. 5 oz (0.14 kg)



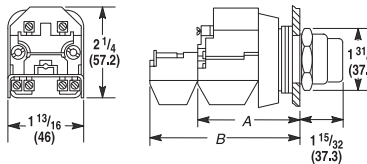
Transformer Type Pilot Light
 Shipping Wt. 8 oz (0.22 kg)



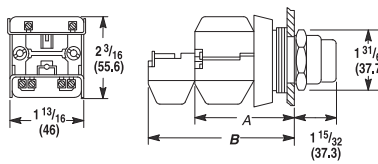
Cluster Pilot Light
 Shipping Wt. 12 oz (0.34 kg)



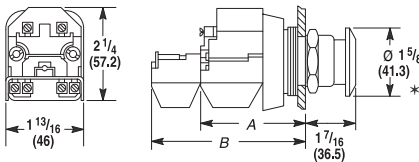
Dual Input Transformer Type Pilot Light



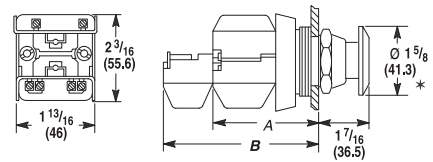
Transformer Type (Push-to-Test Pilot Light and Illuminated Push Button)



Full Voltage, Neon and Dual Input Type (Push-to-Test Pilot Light and Illuminated Push Button)



Push-Pull and Twist or Pull Release Units (Transformer Type Illuminated)



Push-Pull and Twist or Pull Release Units (Full Voltage, Neon and Dual Input Illuminated and All Non-Illuminated)

* Jumbo mushroom versions are 2-1/4 in. (57.2 mm) diameter.

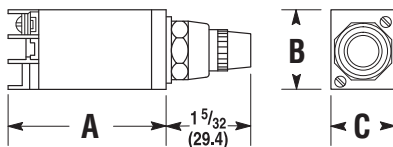
Push-to-Test Pilot Lights Illuminated Push Buttons and Illuminated Push-Pull Buttons							Non-Illuminated Push-Pull Buttons					
Cat. No. Suffix*	Description	Transformer Type		Full Voltage or Neon Type		Cat. No. Suffix	Description	Transformer Type				
		Dim.	Ship. Wt.	Dim.	Ship. Wt.			Dim.	Ship. Wt.			
D4	Transformer or Terminal Module and One Shallow Contact Block	A	2-5/32 (54.8)†	9 oz. (0.25 kg)	A	2-1/32 (51.6)	7 oz. (0.25 kg)	D4	One Shallow Contact Block	A	2-1/32 (51.6)	5 oz. (0.14 kg)
A1 and A7	Transformer or Terminal Module and One Shallow Block and One Mini Contact Block	B	2-7/8 (73)	10 oz. (0.28 kg)	B	2-7/8 (73)	8 oz. (0.22 kg)	A4 A5 A7	Two Shallow Contact Blocks	A	2-1/32 (51.6)	6 oz. (0.17 kg)
AP D1P D2P	Transformer or Terminal Module and One Sealed Switch Contact Block	A	3-1/32 (77)	10 oz. (0.28 kg)	A	2-29/32 (73.8)	8 oz. (0.22 kg)	B6	Two Shallow Blocks and Two Mini Contact Blocks	B	2-7/8 (73)	8 oz. (0.22 kg)

* Applies to illuminated push-pull push buttons only.

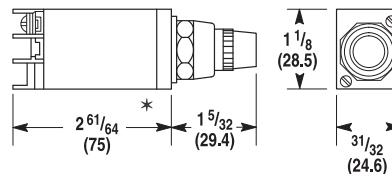
† Dual input type pilot light dimension is 2-13/32 in. (61.1 mm).

10

18 mm Small Pilot Lights



Small Pilot Light Including Push-To-Test
 Shipping Weight 3 oz (0.08 kg)



Small Pilot Light Dual Input (Diode)
 Shipping Weight 3 oz (0.08 kg)

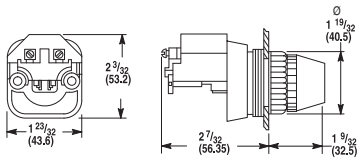
Device	A	B	C
800T-PS, -PSD, -PST, -QS, -QST, and -RST	2-1/4 (57.2)	1-1/16 (27)	27/32 (21.4)
800T-PSDT	2-61/64 (75)	1-15/64 (31.4)	31/32 (24.6)

* Transfer dual input pilot light dimension is 2-31/32 in. (75.4 mm).

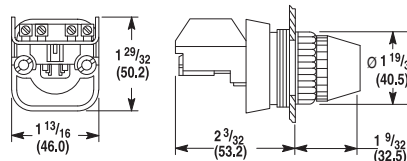


Dimensions in inches (millimeters). Dimensions are not intended to be used for manufacturing purposes.

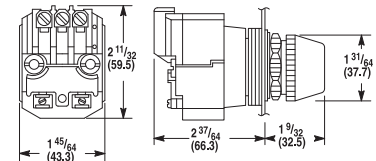
Push-to-Test Pilot Light and Illuminated Devices (Bul. 800H Only)



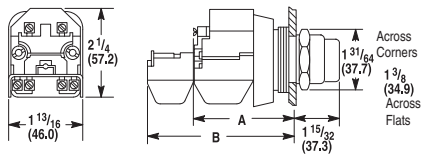
Transformer Type Pilot Light
 (Incandescent and LED)
Shipping Weight. 12 oz (0.34 kg)



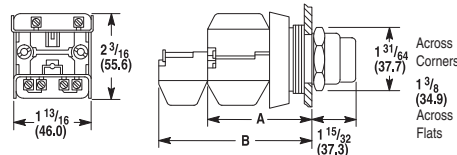
Full Voltage and Dual Input Diode Type
 Pilot Light (Incandescent, Neon, LED)
Shipping Weight. 5 oz (0.14 kg)



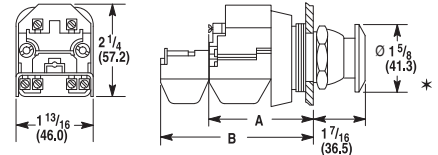
Dual Input Transformer Type Pilot Light
Shipping Weight. 14 oz (0.40 kg)



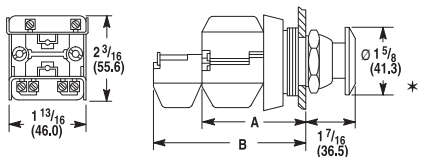
Push-to-Test Pilot Light and Illuminated
 Push Button
 (Transformer Type: Incandescent, LED)



Push-to-Test Pilot Light and
 Illuminated Push Button
 (Full Voltage: Incandescent, LED, Neon;
 and Dual Input Type)



Momentary Mushroom, Push-Pull and Twist or
 Pull Release Units
 (Transformer Type: Incandescent, LED; Illuminated)



Momentary Mushroom, Push-Pull and
 Twist or Pull Release Units
 (Full Voltage: Incandescent, LED, Neon;
 and Dual Input Illuminated)

Push-to-Test Pilot Lights
Illuminated Push Buttons, Illuminated Push-Pull and Twist or Pull Release Push Buttons

Cat. No. Suffix*	Description	Transformer Type			Full Voltage or Neon Type		
		Dimension	Shipping Weight		Dimension	Shipping Weight	
D4	Transformer or Terminal Module and One Shallow Contact Block	A	2-5/32 (54.8)‡	9 oz. (0.25 kg)	A	2-1/32 (51.6)§	7 oz. (0.20kg)
A1 and A7	Transformer or Terminal Module, One Shallow Block and One Mini Contact Block	B	2-7/8 (73)	10 oz. (0.28 kg)	B	2-7/8 (73)	8 oz. (0.22 kg)
AP	Transformer or Terminal Module and One Sealed Switch Contact Block	B	2-29/32 (73.8)	10 oz. (0.28 kg)	B	2-29/32 (73.8)	8 oz. (0.22 kg)

* Jumbo mushroom versions are 2-1/4 in. (57.2 mm) diameter.

⊛ Applies to illuminated push-pull push buttons only.

‡ Dual input type pilot light dimension is 2-13/32 in. (61.1 mm).

§ Dual input type pilot light dimension is 2-9/32 in. (57.9 mm).